

EIA for VILLA AND PRIVATE CHALET DEVELOPMENT AT KELAMBU BEACH, KUDAT, SABAH



CLIENT: Exquisite Borneo Developments Sdn. Bhd.

This project involved preparation of Environmental Impact Assessment (EIA) for compliance of the project with Government regulations.

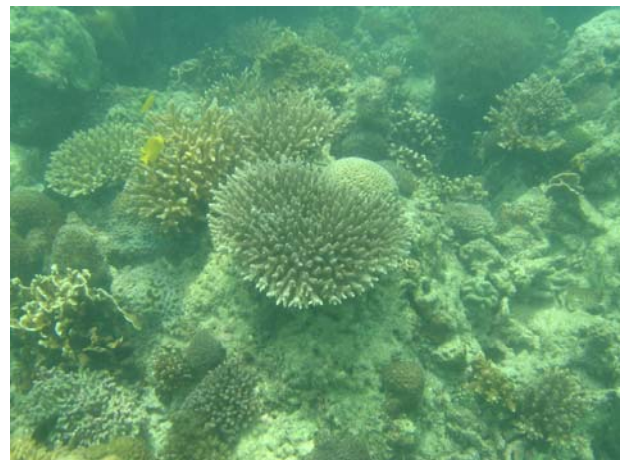
The development involves both beachfront and hilltop villas requiring understanding of both coastal processes and environments, and hillslope stability issues.



Investigations of the surrounding environment expanded to terrestrial environments from swamp forest to tropical heath forest, and marine environments including previously unexplored coral reefs.

Mitigation measures were designed to reduce impacts on issues such as

- Soil Erosion
- Solid Waste Management
- Interaction with local villagers
- Traffic calming measures
- Lighting (impacts on turtle nesting)
- Water pollution (spillages, sewage, etc)
- Local utility provision



In the final review, the recommended mitigation measures were found to offer long term economic savings, and to add to the attractions of the site for tourism.